



Developing a V22B Metafile: Importing Custom Objects

Matt Mayfield, MS, CTR

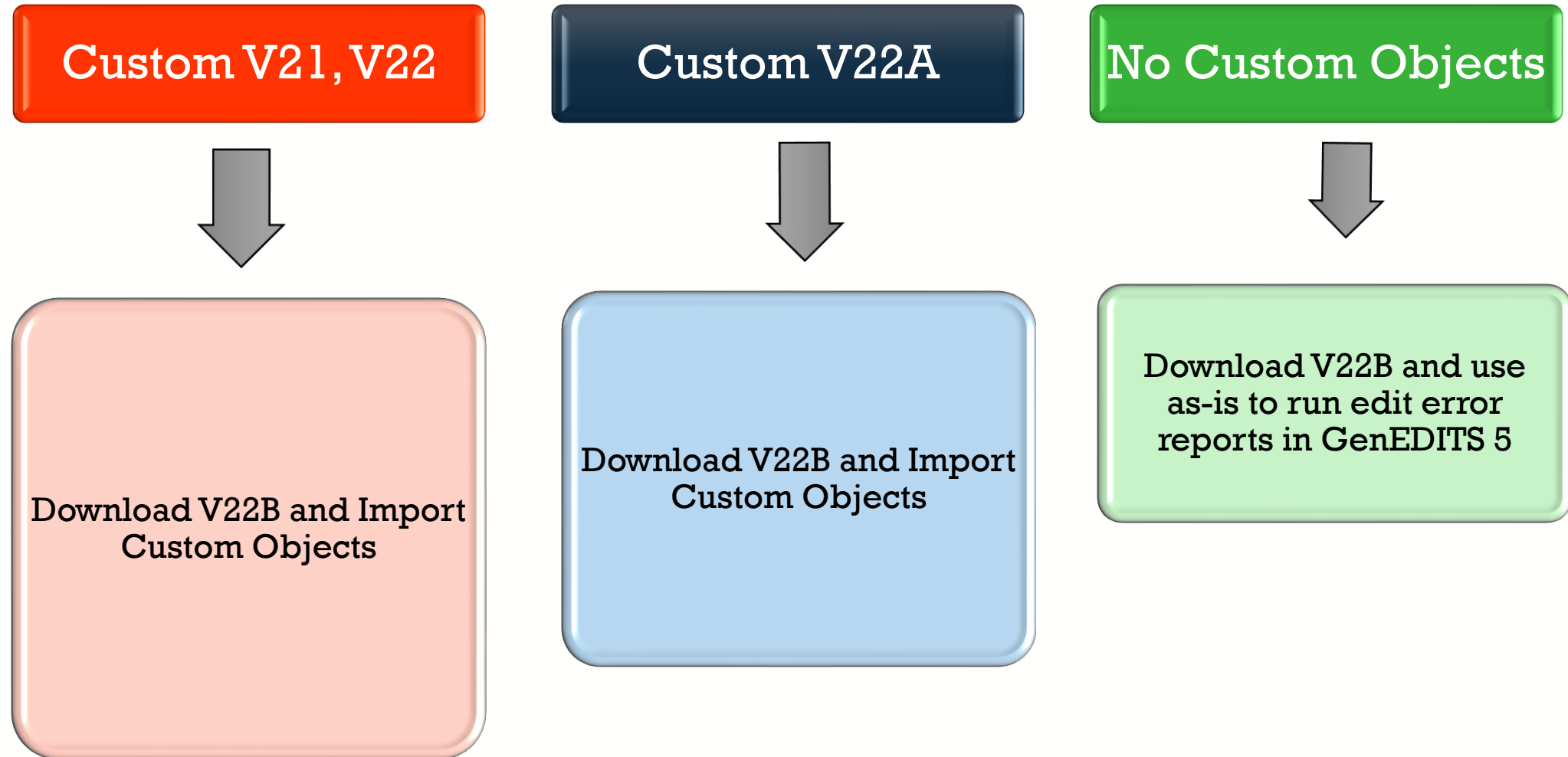
NPCR EDITS Coordinator

cancerinformatics@cdc.gov

Informatics, Data Science, and Applications Team (IDSAT)
Cancer Surveillance Branch
Division of Cancer Prevention and Control
NCRA



Overview



<https://www.cdc.gov/cancer/npcr/tools/edits/edits50.htm>

Focus of this Presentation

V22B METAFILE

- Step-by-step instructions are found in the F1 Help menu within NPCR software
 - Described as Major update in EW5 Help menu
- EditWriter v5: [EDITS50](#) | [NPCR](#) | [Cancer](#) | [CDC](#)
- NAACCR V22B ready to go if you have no customizations

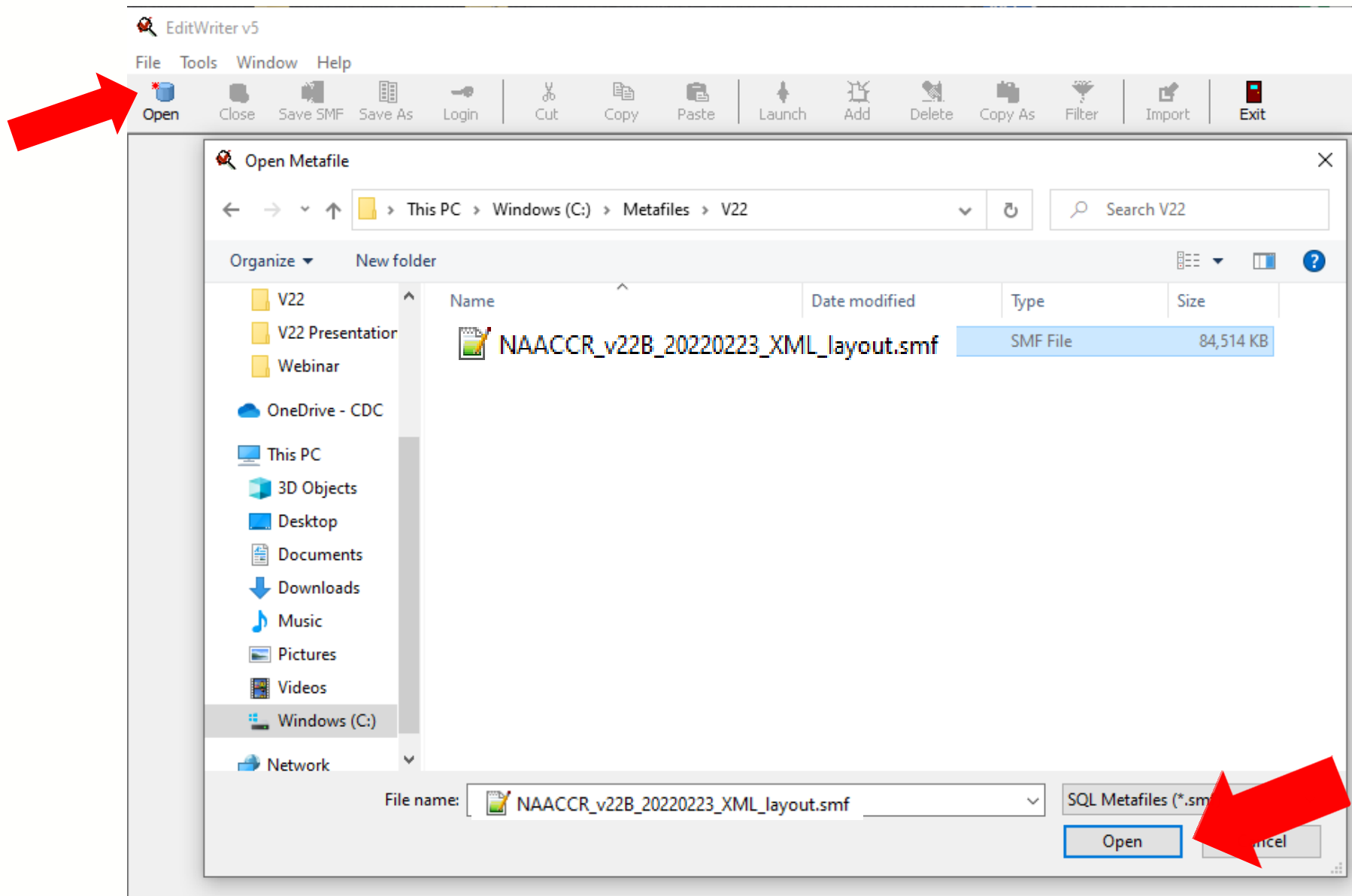
Resources: Getting Started



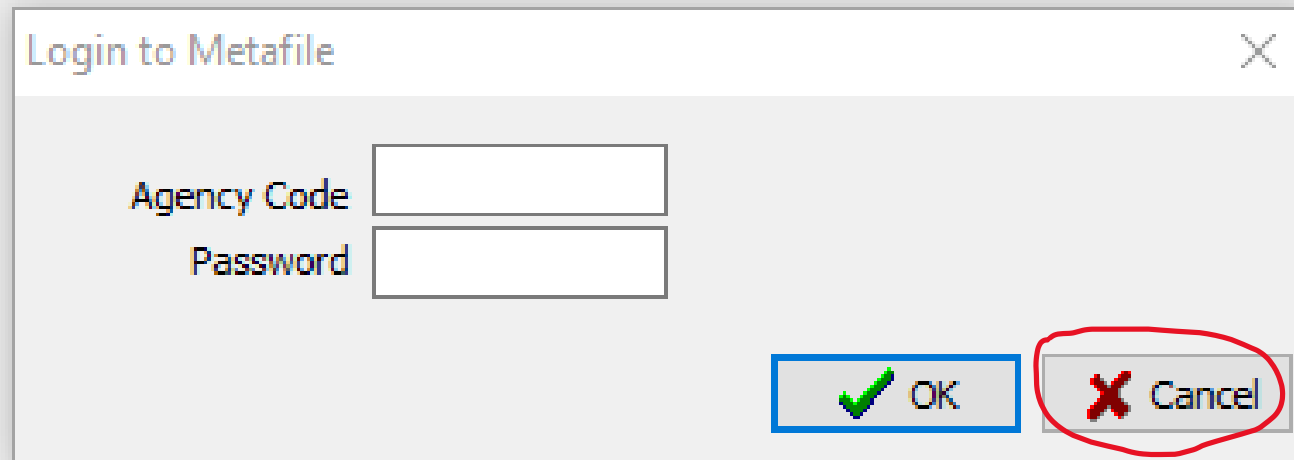
- <https://www.naaccr.org/standard-data-edits/>
- <https://www.naaccr.org/data-standards-data-dictionary/>
- <https://www.naaccr.org/xml-data-exchange-standard>
- <https://www.cdc.gov/cancer/npcr/tools/edits/edits50.htm>
- <https://www.cdc.gov/cancer/npcr/tools/registryplus/index.htm>

IMPORTING OBJECTS





Select Cancel to enter the V22B Metafile



Login to Metafile

Agency Code

Password

A red arrow points to the 'Cancel' button.

Select Import

EditWriter v5

File Agencies Reports View Tools Window Help

Open Close Save SMF Save As Login Cut Copy Paste Launch Add Delete Copy As Filter **Import** Exit

Metafile: MMM_v22B_webinar 202203331.smf

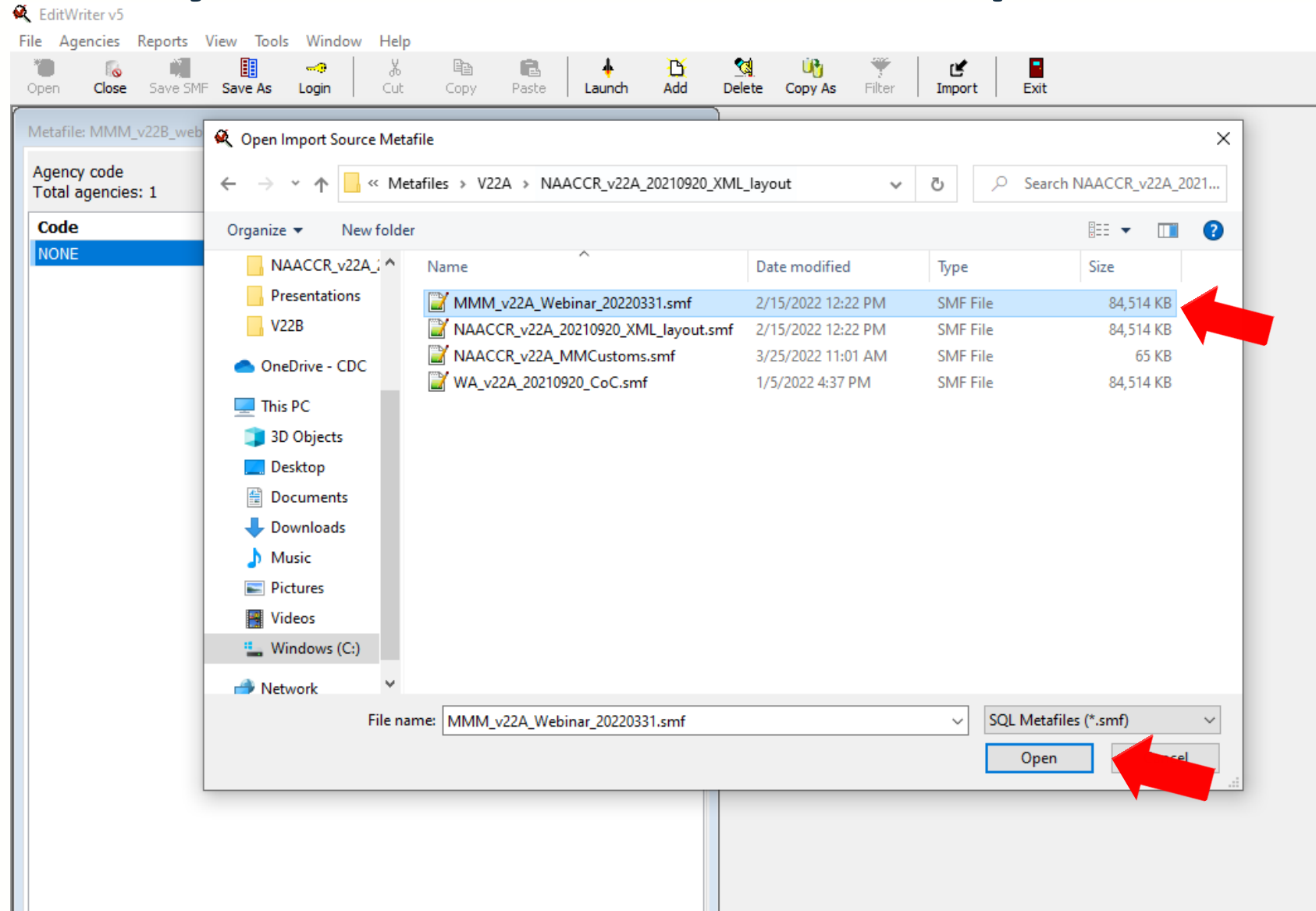
Agency code

Total agencies: 1

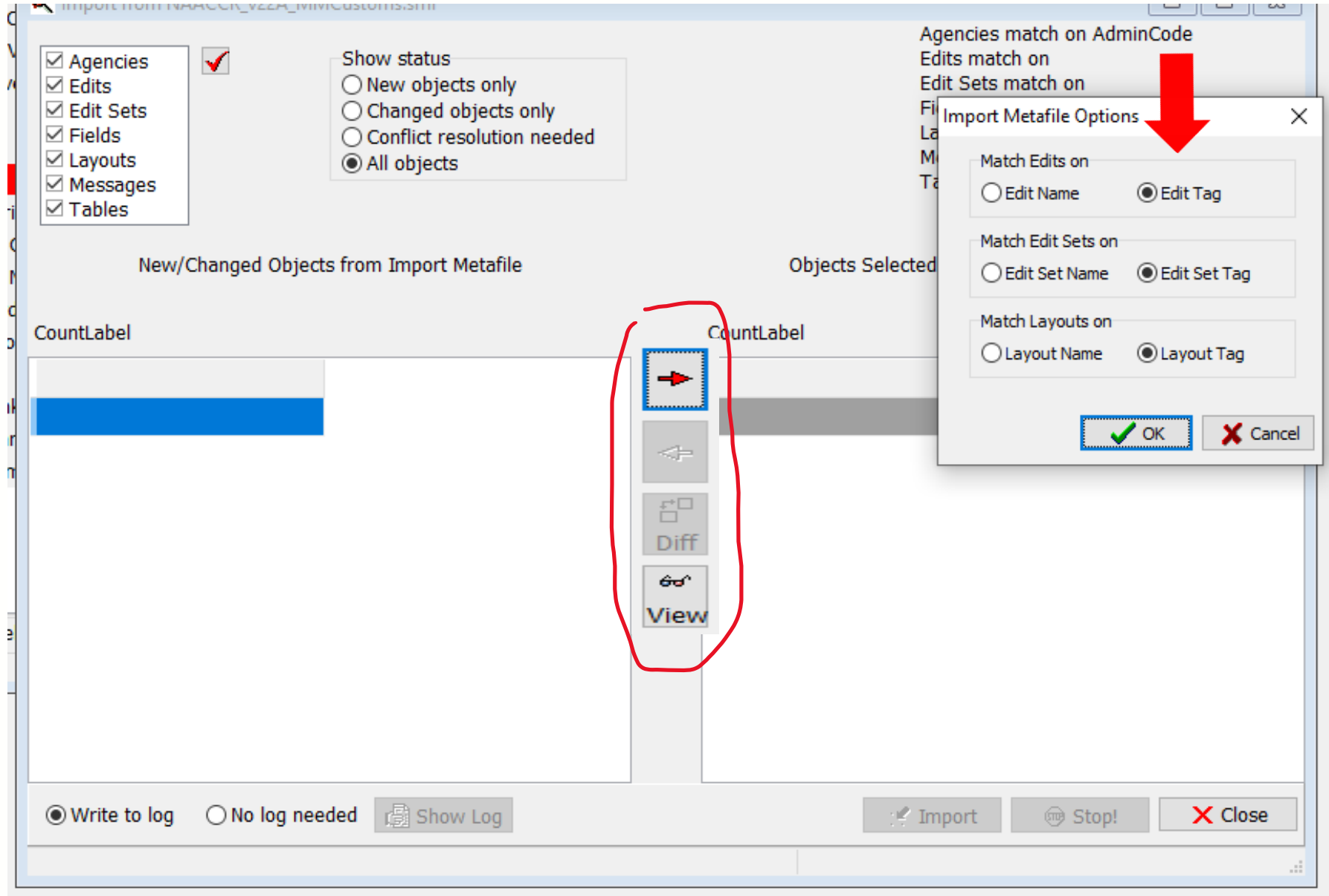
| Code | Organization Name |
|------|--------------------|
| NONE | No Standard Setter |



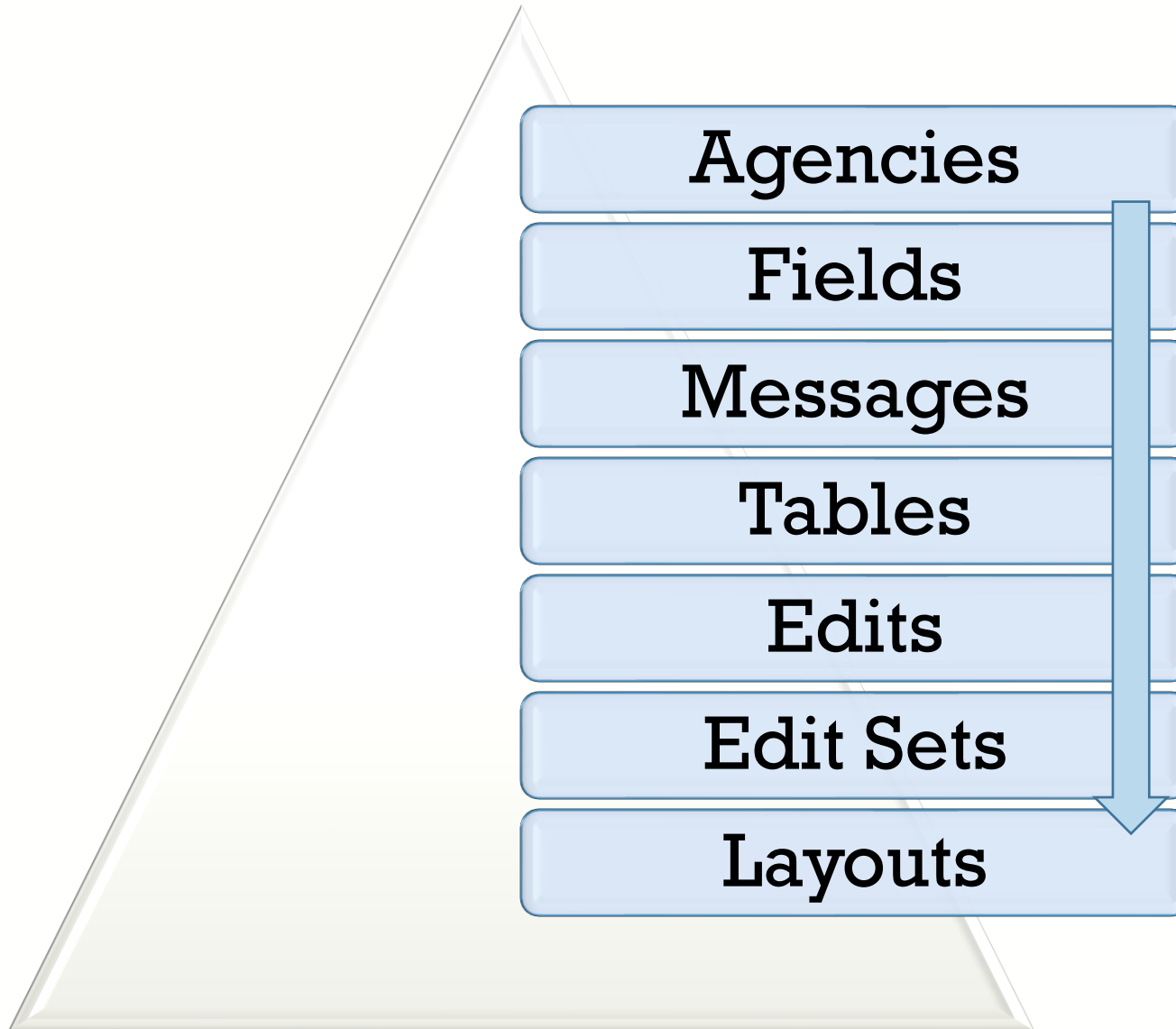
Browse to your V22A Metafile and Open



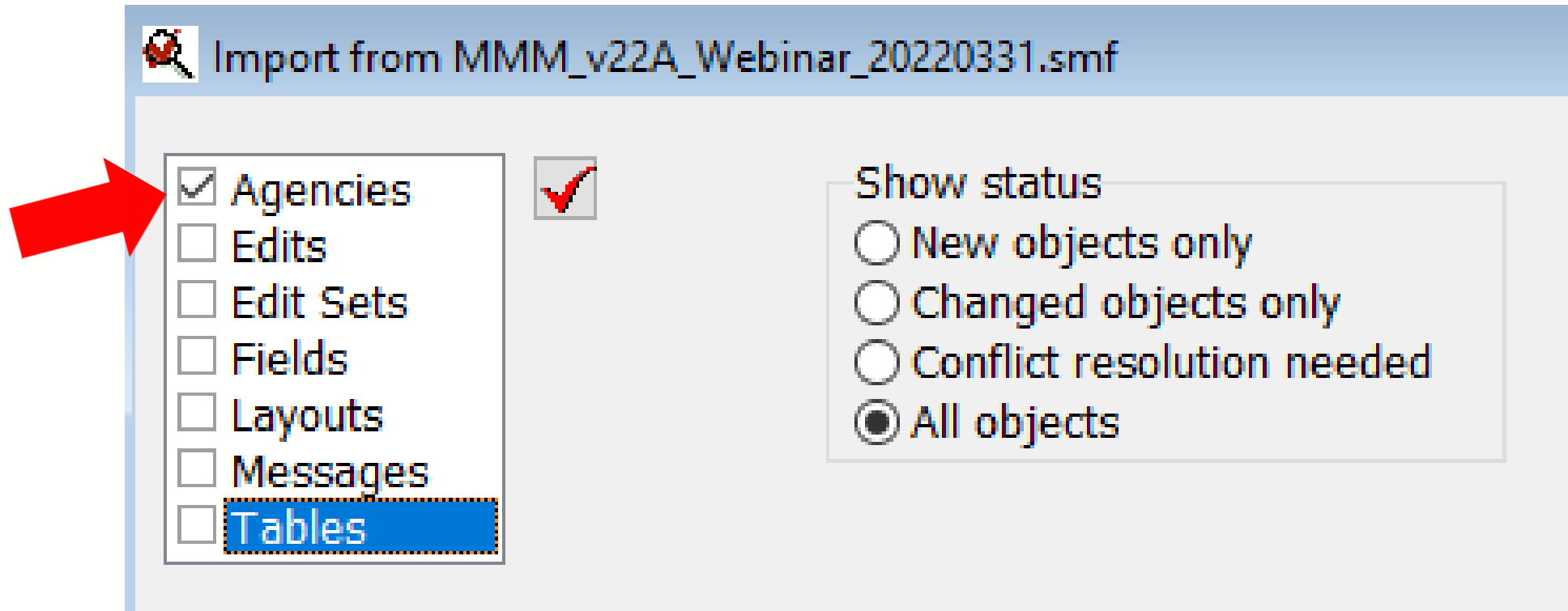
Import Metafile by Tags



Import Order



Importing Agency Code and Password



Import from MMM_v22A_Webinar_20220331.smf

- ☒ Agencies
- ☐ Edits
- ☐ Edit Sets
- ☐ Fields
- ☐ Layouts
- ☐ Messages
- ☐ Tables

☒

Show status

- ☐ New objects only
- ☐ Changed objects only
- ☐ Conflict resolution needed
- ☒ All objects

Import your Agency

Import from MMM_v22A_Webinar_20220331.smf

☒ Agencies
☐ Edits
☐ Edit Sets
☐ Fields
☐ Layouts
☐ Messages
☒ Tables

Show status
☐ New objects only
☐ Changed objects only
☐ Conflict resolution needed
☒ All objects

Agencies match on AdminCode
Edits match on EditTag
Edit Sets match on EditSetTag
Fields match on FieldNumber
Layouts match on LayoutTag
Messages match on MessageNumber
Tables match on TableName

New/Changed Objects from Import Metafile

21 objects showing

| Status | Object | Record Key | Agency |
|--------|--------|---|-------------|
| NEW | Agency | American Joint Committee on Cancer | AJCC |
| NEW | Agency | AJCC/NPCR | AJCC/NPCR |
| NEW | Agency | Canadian Council of Cancer Registries | CCCR |
| NEW | Agency | CENSUS | CENSUS |
| NEW | Agency | Census/NPCR | Census/NPCR |
| NEW | Agency | CMS | CMS |
| NEW | Agency | Commission on Cancer | COC |
| NEW | Agency | COC & AJCC | COC/AJCC |
| NEW | Agency | COC/REMOVED | COC/REMOVE |
| NEW | Agency | Collaborative Stage | CS |
| NEW | Agency | FIPS/SEER | FIPS/SEER |
| NEW | Agency | HL7 | HL7 |
| NEW | Agency | MMM | MMM |
| NEW | Agency | North American Assoc. of Central Cancer R | NAACCR |
| NEW | Agency | NAACCR & COC | NAACCR/COC |
| NEW | Agency | NAACCR & NPCR | NAACCR/NPCR |

Objects Selected for Import into Target Metafile

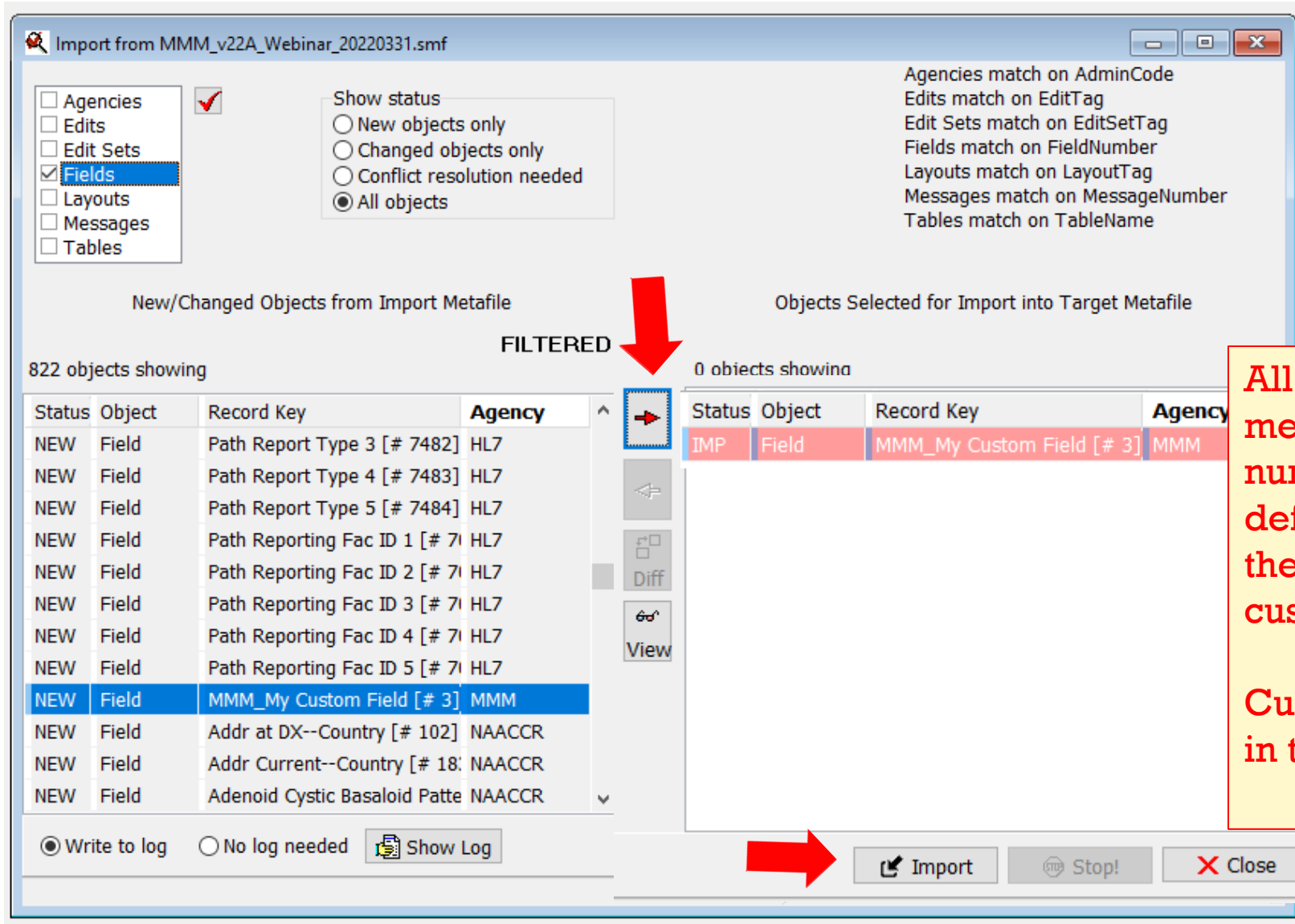
0 objects showing

| Status | Object | Record Key | Agency |
|--------|--------|------------|--------|
| NEW | Agency | MMM | MMM |

Write to log ☒ No log needed ☐ Show Log

Import Stop! Close

Importing Custom Fields



All new custom fields added to the metafile **must** have a custom item number specified within the defined range. The software uses the item number to position your custom fields.

Custom FIELDS must be specified in the metafile.

Importing Custom Messages

Import from MMM_v22A_Webinar_20220331.smf

☐ Agencies ☒ ☐ Edits ☐ Edit Sets ☐ Fields ☐ Layouts ☒ Messages ☐ Tables

Show status
☐ New objects only
☐ Changed objects only
☐ Conflict resolution needed
☒ All objects

Agencies match on AdminCode
Edits match on EditTag
Edit Sets match on EditSetTag
Fields match on FieldNumber
Layouts match on LayoutTag
Messages match on MessageNumber
Tables match on TableName

New/Changed Objects from Import Metafile
1383 objects showing

Objects Selected for Import into Target Metafile
2 objects showing

FILTERED

| Status | Object | Record Key | Agency |
|--------|---------|--|--------|
| NEW | Message | 4898: Breast schema: If %F4 = %V4, % | CS |
| NEW | Message | 4899: Breast schema: If %F5 = %V5, % | CS |
| NEW | Message | 4901: Conflict between %F4 (%V4) and | CS |
| NEW | Message | 7125: If year of %F1 is 2016 or later, % | CS |
| NEW | Message | 7126: %F6 cannot be left blank | CS |
| NEW | Message | 7127: %F7 cannot be left blank | CS |
| NEW | Message | 7128: If year of %F1 is 2016 or later, % | CS |
| NEW | Message | 1002: Conflict among %F1: %V1, %F2: % | NAACCR |
| NEW | Message | 1003: %F1 (%V1) is an invalid date | NAACCR |
| NEW | Message | 1004: %F1: %V1 is not valid for %F2: % | NAACCR |
| NEW | Message | 1005: Conflict among %F1:%V1, %F2: % | NAACCR |
| NEW | Message | 1008: %V1 is not a valid value for %F1 | NAACCR |

| Status | Object | Record Key | Agency |
|--------|---------|---------------------------------|--------|
| IMP | Field | MMM_My Custom Field [# 3] | MMM |
| IMP | Message | 9990: This is my custom message | MMM |

☒ Write to log ☐ No log needed Show Log

Import Stop! Close

Importing Custom Tables

Import from MMM_v22A_Webinar_20220331.smf

☐ Agencies
☐ Edits
☐ Edit Sets
☐ Fields
☐ Layouts
☐ Messages
☒ **Tables**

☒ Show status
☐ New objects only
☐ Changed objects only
☐ Conflict resolution needed
☒ All objects

Agencies match on AdminCode
Edits match on EditTag
Edit Sets match on EditSetTag
Fields match on FieldNumber
Layouts match on LayoutTag
Messages match on MessageNumber
Tables match on TableName

New/Changed Objects from Import Metafile

178 objects showing

| Status | Object | Record Key | Agency |
|--------|--------|------------|--------|
| NEW | Table | SITGRP98 | COC |
| NEW | Table | STATE | COC |
| NEW | Table | SURAPP98 | COC |
| NEW | Table | SURG98 | COC |
| NEW | Table | SUROTH98 | COC |
| NEW | Table | AJC5SIGP | NAACCR |
| NEW | Table | AJC5STGC | NAACCR |
| NEW | Table | AJC5STGP | NAACCR |
| NEW | Table | AJC6HIST | NAACCR |
| NEW | Table | AJC6SIGP | NAACCR |
| NEW | Table | AJC6STGC | NAACCR |
| NEW | Table | AJC6STGP | NAACCR |
| NEW | Table | AJC7MC | NAACCR |
| NEW | Table | AJC7MP | NAACCR |
| NEW | Table | AJC7NC | NAACCR |
| NEW | Table | AJC7NP | NAACCR |
| NEW | Table | AJC7SIGP | NAACCR |
| NEW | Table | AJC7STGC | NAACCR |
| NEW | Table | AJC7STGP | NAACCR |
| NEW | Table | AJC7TC | NAACCR |
| NEW | Table | AJC7TP | NAACCR |

Objects Selected for Import into Target Metafile

1 objects showing

| Status | Object | Record Key | Agency |
|--------|--------|------------|--------|
| IMP | Table | MMM5555 | MMM |

☒ Write to log ☐ No log needed Show Log

Import Stop! Close

Importing Custom Edits

☐ Agencies

☒ Edits

☐ Edit Sets

☐ Fields

☐ Layouts

☐ Messages

☐ Tables

☒ Show status

☐ New objects only

☐ Changed objects only

☐ Conflict resolution needed

☒ All objects

Agencies match on AdminCode
Edits match on EditTag
Edit Sets match on EditSetTag
Fields match on FieldNumber
Layouts match on LayoutTag
Messages match on MessageNumber
Tables match on TableName

New/Changed Objects from Import Metafile

2699 objects showing

| Status | Object | Record Key | Agency |
|--------|--------|---|--------|
| NEW | Edit | Obsolete Codes - CS Site-Specific Factor22 | CS |
| NEW | Edit | Obsolete Codes - CS Site-Specific Factor23 | CS |
| NEW | Edit | Obsolete Codes - CS Site-Specific Factor25 | CS |
| NEW | Edit | Obsolete Codes - CS Tumor Size (CS) | CS |
| NEW | Edit | Obsolete Codes - CS Tumor Size/Ext Eval (C | CS |
| NEW | Edit | Regional Nodes Ex, Reg Nodes Pos (CS) | CS |
| NEW | Edit | Summary Stage 2000, Over-ride CS 20 (NP | CS |
| NEW | Edit | MMM_ Date Hormone, Date Flag, DX Date (| MMM |
| NEW | Edit | MMM_ Date Initial RX SEER, Date Flag (NPCF | MMM |
| NEW | Edit | MMM_ Follow-Up Source Central, Vital Statu | MMM |
| NEW | Edit | _SYS AJCC ID (NAACCR) | NAACCR |
| NEW | Edit | _SYS AJCC ID, Date of Diagnosis (NAACCR) | NAACCR |
| NEW | Edit | _SYS AJCC ID, Primary Site, Histology, Beha | NAACCR |
| NEW | Edit | _SYS AJCC ID, Site, Histo, Age (NAACCR) | NAACCR |
| NEW | Edit | _SYS AJCC ID, Site, Histo, Sex (NAACCR) | NAACCR |
| NEW | Edit | _SYS Schema ID (NAACCR) | NAACCR |
| NEW | Edit | _SYS Schema ID, AJCC ID (NAACCR) | NAACCR |
| NEW | Edit | _SYS Schema ID, Date of Diagnosis (NAACC | NAACCR |
| NEW | Edit | _SYS Schema ID, Primary Site, Behavior 0,1 | NAACCR |
| NEW | Edit | _SYS Schema ID, Primary Site, Histology (N | NAACCR |
| NEW | Edit | _SYS Schema ID, Site, Histo, Sex (NAACCR) | NAACCR |
| NEW | Edit | Abstracted By (NAACCR) | NAACCR |
| NEW | Edit | Accession Number, Class of Case, Seq Num | NAACCR |
| NEW | Edit | Addr at DX--City (NAACCR) | NAACCR |

Write to log

No log needed

Show Log

FILTERED

Objects Selected for Import into Target Metafile

→

←

Diff

View

| Status | Object | Record Key | Agency |
|--------|--------|--|--------|
| NEW | Edit | MMM_ Date Hormone, Date Flag, DX Date (| MMM |
| NEW | Edit | MMM_ Date Initial RX SEER, Date Flag (NPCF | MMM |
| NEW | Edit | MMM_ Follow-Up Source Central, Vital Statu | MMM |
| IMP | Table | MMM5555 | MMM |

Import

Stop!

Close

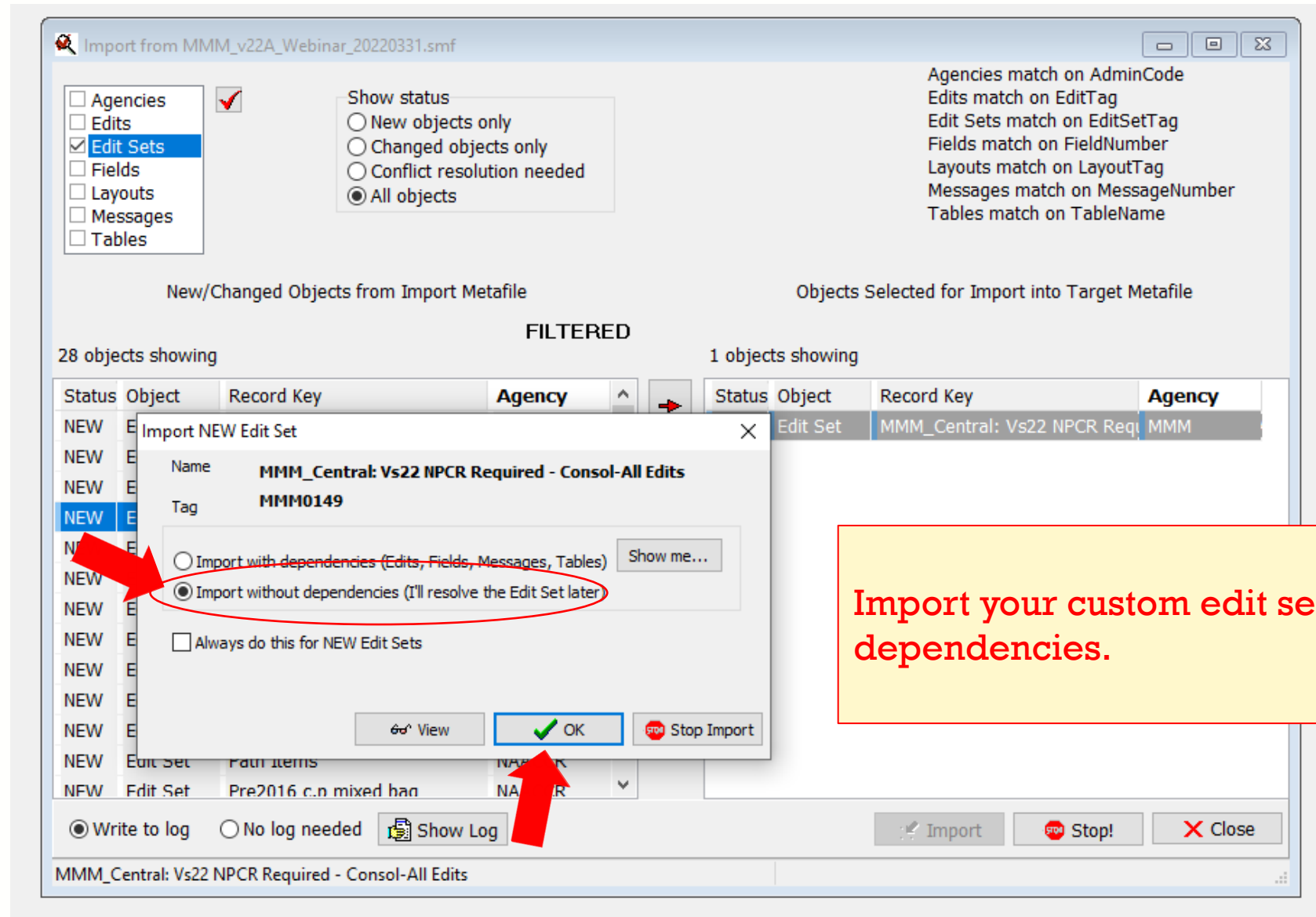
Importing Custom Edits: Without Dependencies

The screenshot shows the 'Import Metafile' dialog box with the 'Import without dependencies (I'll resolve the Edit Set later)' option selected and circled in red. The 'Import with dependencies (Edits, Fields, Messages, Tables)' option is also visible. The 'Always do this for NEW Edits' checkbox is unchecked. The 'OK' button is highlighted with a green checkmark.

In this update, we are importing **WITHOUT** dependencies.

Consult the F1 menu for more details about dependencies.

Importing Custom Edit Sets: Without Dependencies



Importing Custom Layouts

Import from MMM_v22A_Webinar_20220331.smf

☐ Agencies ☒ ☐ Edits ☐ Edit Sets ☐ Fields ☒ Layouts ☐ Messages ☐ Tables

Show status
☐ New objects only
☐ Changed objects only
☐ Conflict resolution needed
☒ All objects

Agencies match on AdminCode
Edits match on EditTag
Edit Sets match on EditSetTag
Fields match on FieldNumber
Layouts match on LayoutTag
Messages match on MessageNumber
Tables match on TableName

New/Changed Objects from Import Metafile

Objects Selected for Import into Target Metafile

1 objects showing

| Status | Object | Record Key | Agency |
|--------|--------|-------------------------------|--------|
| NEW | Layout | NAACCR v22A XML RP-9A (RP-9A) | NPCR |

2 objects showing

| Status | Object | Record Key | Agency |
|--------|----------|--|--------|
| IMP | Edit Set | MMM_Central: Vs22 NPCR Required - Consol | MMM |

Import NEW Layout

Name **MMM_v22A XML RP-10A**

Tag **MMM_10A**

☐ Import with dependencies (Fields) ☒ Import without dependencies (I'll resolve the Layout later)

☐ Always do this for NEW Layouts

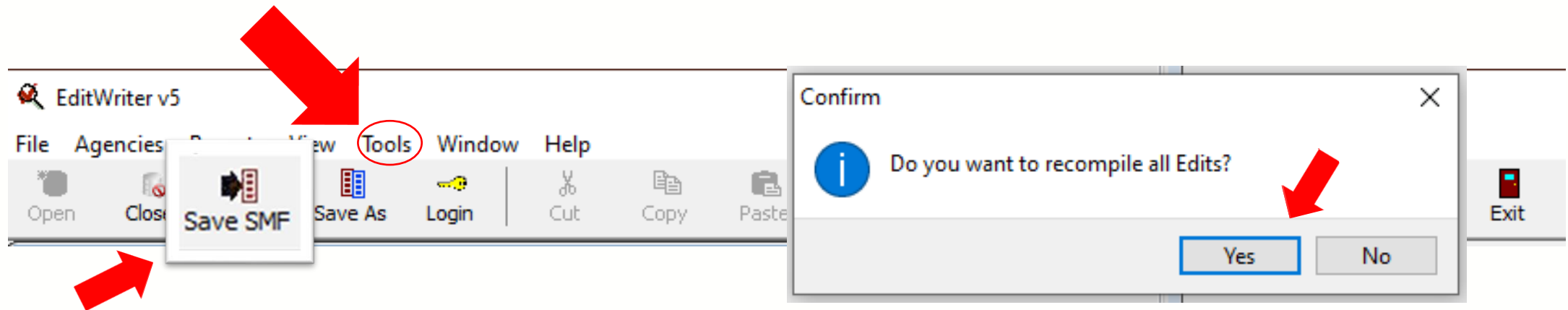
View OK Stop Import

☒ Write to log ☐ No log needed Show Log

Import Stop! Close

Final Tasks

- **Recompile All Edits** in your metafile under the **Tools** menu before saving SMF
- Within the **Tools** menu, there is also a feature for **Metafile Version and Comment**
 - Documentation is the last metafile task before implementation in central registry software or distribution to reporting facilities
- **SAVE SMF** and rename your custom V22B metafile
 - Ex: **MMM_v22B_20220331_XML_layout.smf**



Thank you!

Go to the official federal source of cancer prevention information:

www.cdc.gov/cancer

cancerinformatics@cdc.gov



Division of Cancer Prevention and Control

Reliable. Trusted. Scientific.