

SEER Reliability Website

Lessons learned from SEER Reliability Coding Practice
Studies software development

Outline

- Purpose of the SEER Reliability Website
- Background
- Features of the website
- Process of creating and posting a new study
- Lessons learned
- Next steps for the website

Purpose of the SEER Reliability Website

- Mechanism to gather data on the coding skills of central and hospital registry personnel
- Mechanism to gather data on the consistency in the application of coding rules among abstractors

Background

- Began conducting studies in 2004
- Redesigned in 2007 – all studies in one database
- Generic question/answer system
- Demographics questionnaire
- Post Study Participant Poll



Login

Username

Password

Sign In

If you do not currently have an account you can
[request a new account from the administrator](#)

[Forgot your password?](#)

[Forgot your username?](#)

For help contact: reliability@imsweb.com

Save/remember your username and password for future reliability studies!

Features of the SEER Reliability Website

- Request for a new account
- Retrieve a forgotten username and/or password
- Display of information on a study specific Home page



Study: 2011 Pre-NCRA Mini Reliability Study

Sign Out

- HOME
- CASES
- EDIT STUDY
- EDIT USERS
- EDIT INSTITUTES
- REPORTS
- SYSTEM
- PROFILE
- ABOUT

News

Important:

- Use the 2011 version of the Collaborative Stage Data Collection System (CSv2) v0203 to code all CS data items.
- Schemas are provided on the [Collaborative Stage Data Collection System website](#).
- Use the [Multiple Primary and Histology Coding Rules](#) to code histology.
- Use the [2010 SEER Coding Manual](#) and the [2011 FORDS Manual](#) for coding all other standard data items for cases.
- Code all data items for all cases.

Relevant Documents:

- [Breast Schema](#)
- [Colon Schema](#)
- [Lung Schema](#)
- [Melanoma Skin Schema](#)
- [Prostate Schema](#)

More features of the SEER Reliability Website

- Demographics and Post Study Participant Poll
- Reports
- View the preferred answers and rationale
- Print a certificate if CEUs are awarded
- Code a case – the study participant can view text from medical record as they code the data items



Study: 2011 Pre-NCRA Mini Reliability Study

Sign Out

HOME
CASES

- PRACTICE CASES
- REGULAR CASES

PROFILE
ABOUT

Breast Case 1

2011 Breast Case 01

Mammogram, UnilateralLeft

01/06/2011

History: Family history of breast cancer. Last mammogram was performed less than a month ago.

Findings: There are scatterfibroglandular densities. There are 6-10 clustered calcifications inthe left breast clearly increased since the prior examination.

Impression: BI-RAD4 - suspicious.

Recommendation: Stereotactic guidedcore biopsy or surgical excision of the area of concern in the leftbreast.

Print

Abstract Questions

* indicates a required answer

indicates an optional answer.

1. * Primary Site



2. * Histologic Type

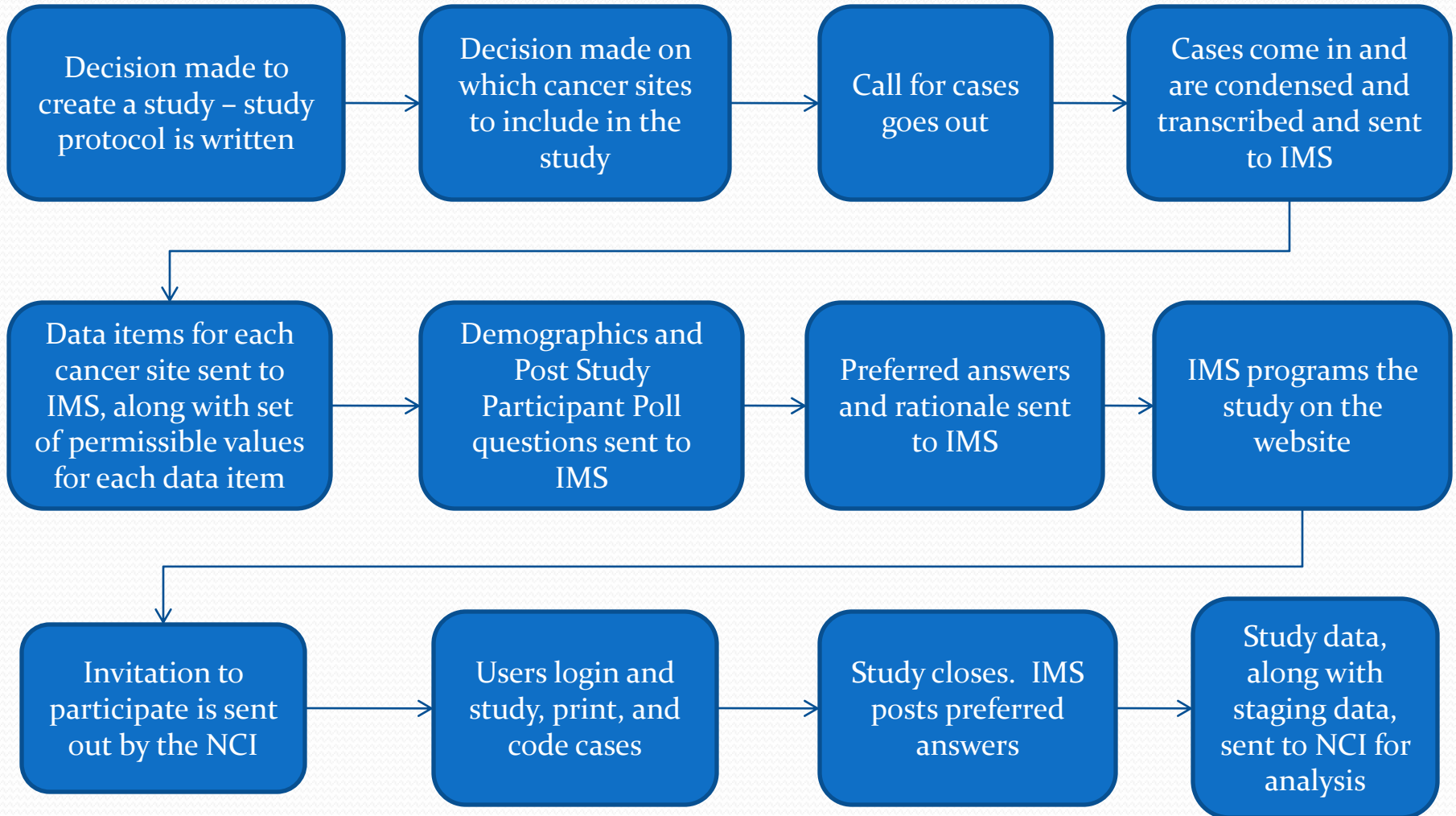


3. * Date of Dx



4. * Behavior Code

Process for Setting up a New Study



Lessons Learned

- Nobody remembers their username and password
 - Result – new warning system to alert new account request with same first and last name or same e-mail
- Do not collect the same data twice
 - Result – we either use institution/affiliation data from account registration or from the demographics, but not both

More lessons learned...

- Security requirements change from study to study
 - Result – Added a security permission to each report
 - Result – Institute administrators are not always asked to approve new user accounts
- Users like to work on cases in various ways, and not always online
 - Result – new mechanism to allow users to print all cases at once, along with a worksheet to enter answers
- MP/H studies present unique challenges
 - Result – still a work in progress – how best to help users enter the data in the correct place?

Next Steps for the SEER Reliability Website

- Continue efforts to make the site user friendly
- 2011 CS Reliability Study
 - Expanded functionality for demographics
 - Retrieving permissible values from the CS DLL
 - Capability to print all text abstracts at once and include a worksheet with each one
 - User entered rationale on each data item that has less than 85% agreement
- Another Coding Practice study towards the end of 2011

More Information

- The SEER Reliability Website is available online at:
<https://reliability.seer.cancer.gov/>
- To request a new account, use the “request a new account from the administrator” link on the login page



Questions?